

IFerrosi floor pole H3300-120

code IF02.930F/99

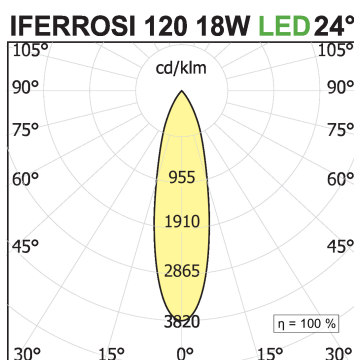
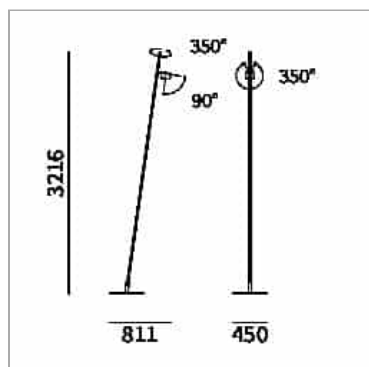


PRODUCT DESCRIPTION

Family of outdoor floor or wall luminaires, available in finished modules or in a modular system for maximum customization. Versions with LED source projectors for accent light are available. Poles of different heights from 700mm to 3000mm are available, to be combined with spots of 6.7W or 18W. Fixing base or possibility to install in different surfaces: flange for wooden surfaces, clamp for concrete and stake for ground. IP54.

PRODUCT SPECS

Installation method	Floor
Light source	LED
Absorbed power	18 W
Color temperature	3000K
Color rendering index CRI	>90
Optic	Flood 24°
Finishing	Graphite
Luminous flux of the product	1483 lm
Luminous efficiency	82 lm/W
Life time estimate	50000h L90 B10 Ta 25°C
Protocol	On/Off
Energy efficiency class	D
Weight	16.5 Kg
Dimension	L450xW850xH3300 Ø120 mm
IP Grade	Ip66
Protection Class	Class III appliance
Power supply/Transformer	Not included
Protocol	See power supply



WEB PAGE



ASSEMBLY INSTRUCTIONS



MANDATORY ACCESSORIES

AE500.20C1

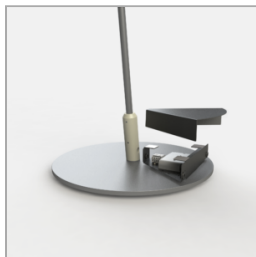


code AE500.20C1

Electronic power supply current

OPTIONAL ACCESSORIES

box-for-power-suppliers IFerrosi system



code IF76/99

Family of outdoor floor or wall luminaires, available in finished modules or in a modular system for maximum customization. Versions with LED source projectors for accent light are available. Poles of different heights from 700mm to 3000mm are available, to be combined with spots of 6.7W or 18W. Fixing base or possibility to install in different surfaces: flange for wooden surfaces, clamp for concrete and stake for ground. IP54.

Technical Sheet

