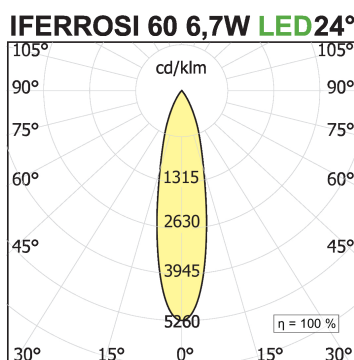
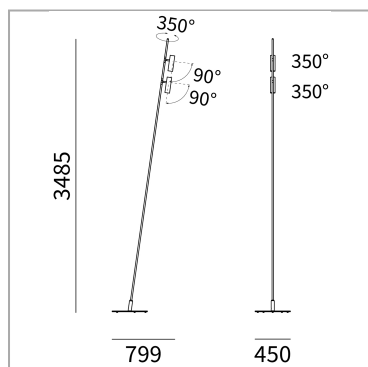
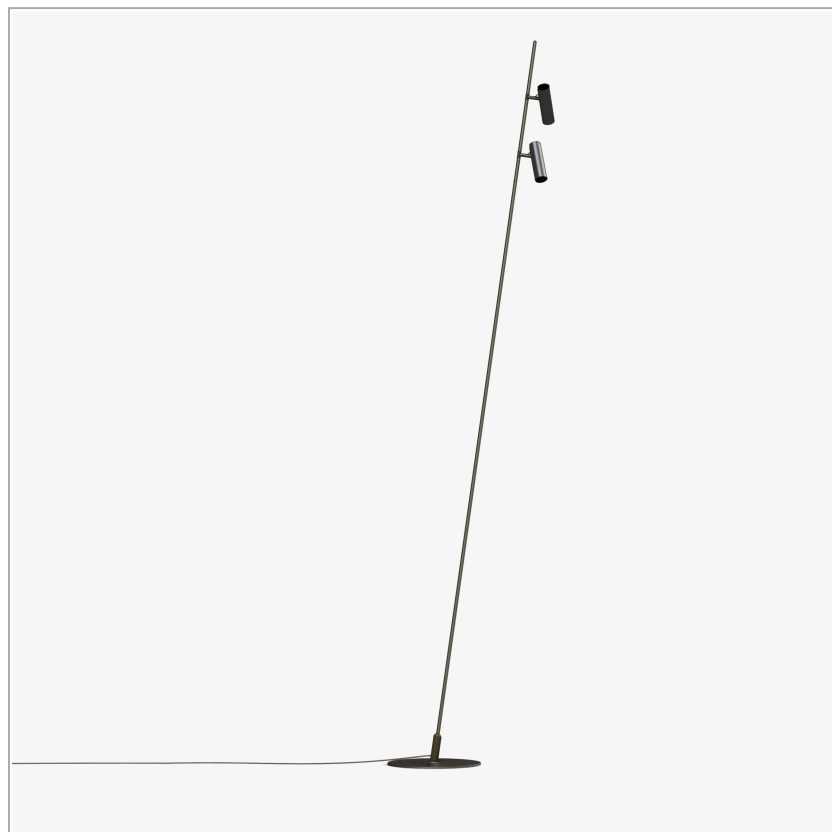


IFerrosi floor pole H3500-60+60

code IF04.935F/99



PRODUCT DESCRIPTION

Family of outdoor floor or wall luminaires, available in finished modules or in a modular system for maximum customization. Versions with LED source projectors for accent light are available. Poles of different heights from 700mm to 3000mm are available, to be combined with spots of 6.7W or 18W. Fixing base or possibility to install in different surfaces: flange for wooden surfaces, clamp for concrete and stake for ground. IP54.

PRODUCT SPECS

Installation method	Floor
Light source	LED
Absorbed power	2x6,7 W
Color temperature	3500K
Color rendering index CRI	>90
Optic	Flood 24°
Finishing	Graphite
Luminous flux of the product	1300 lm
Luminous efficiency	97 lm/W
MacAdam color tolerance	3
Life time estimate	3SDCM 50000h L90 B10 Ta 25°C
Protocol	On/Off
Energy efficiency class	D
Weight	20 Kg
Dimension	L450xW800xH3500 mm
IP Grade	Ip66
Protection Class	Class III appliance
Power supply/Transformer	Not included
Protocol	See power supply

WEB PAGE



ASSEMBLY INSTRUCTIONS



MANDATORY ACCESSORIES

AE700.10C



code AE700.10C

Electronic power supply current

AE700.10C

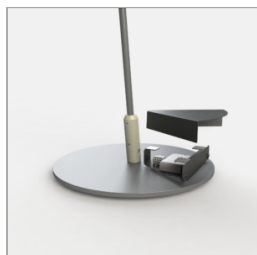


code AE700.10C

Electronic power supply current

OPTIONAL ACCESSORIES

box-for-power-suppliers IFerrosi system



code IF76/99

Family of outdoor floor or wall luminaires, available in finished modules or in a modular system for maximum customization. Versions with LED source projectors for accent light are available. Poles of different heights from 700mm to 3000mm are available, to be combined with spots of 6.7W or 18W. Fixing base or possibility to install in different surfaces: flange for wooden surfaces, clamp for concrete and stake for ground. IP54.

Technical Sheet

