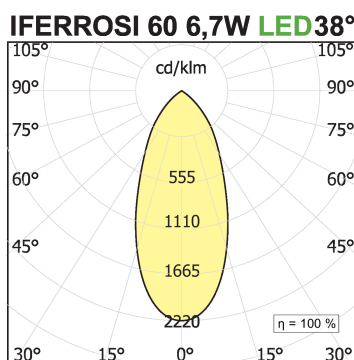
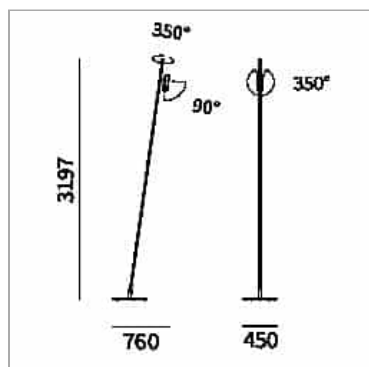


IFerrosi floor pole H3300-60

code IF03.930W/99



PRODUCT DESCRIPTION

Family of outdoor floor or wall luminaires, available in finished modules or in a modular system for maximum customization. Versions with LED source projectors for accent light are available. Poles of different heights from 700mm to 3000mm are available, to be combined with spots of 6.7W or 18W. Fixing base or possibility to install in different surfaces: flange for wooden surfaces, clamp for concrete and stake for ground. IP54.

PRODUCT SPECS

| | |
|------------------------------|---------------------------------|
| Installation method | Floor |
| Light source | LED |
| Absorbed power | 6,7 W |
| Color temperature | 3000K |
| Color rendering index CRI | >90 |
| Optic | Wide 38° |
| Finishing | Graphite |
| Luminous flux of the product | 712 lm |
| Luminous efficiency | 106 lm/W |
| MacAdam color tolerance | 3 |
| Life time estimate | 3SDCM 50000h L90 B10 Ta 25°C |
| Protocol | On/Off |
| Energy efficiency class | D |
| Weight | 16 Kg |
| Dimension | L450xW750xH3300 mm |
| IP Grade | Ip66 |
| Protection Class | Class III appliance |
| Power supply/Transformer | Not included |
| Protocol | See power supply |

WEB PAGE



ASSEMBLY INSTRUCTIONS



MANDATORY ACCESSORIES

AE700.10C

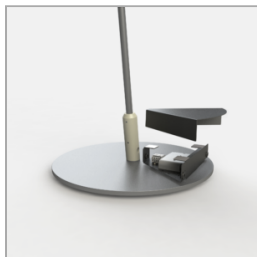


code AE700.10C

Electronic power supply current

OPTIONAL ACCESSORIES

box-for-power-suppliers IFerrosi system



code IF76/99

Family of outdoor floor or wall luminaires, available in finished modules or in a modular system for maximum customization. Versions with LED source projectors for accent light are available. Poles of different heights from 700mm to 3000mm are available, to be combined with spots of 6.7W or 18W. Fixing base or possibility to install in different surfaces: flange for wooden surfaces, clamp for concrete and stake for ground. IP54.

Technical Sheet

