

Leva 5 recessed - kit

code LV005K..940W/01

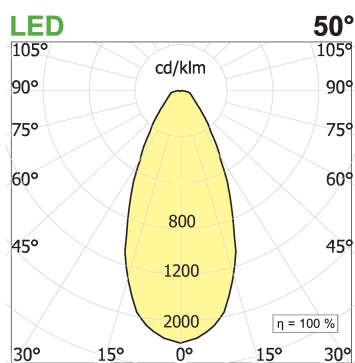
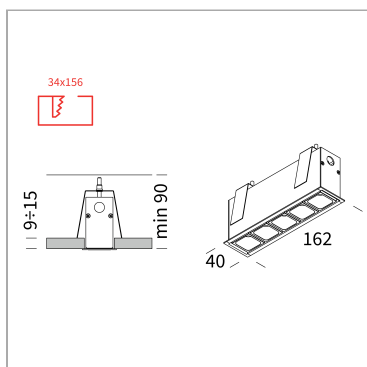


PRODUCT DESCRIPTION

Integrated LED Chip On Board light fixture. Recessed installation with stop. Luminaire body in extruded painted aluminum white box - black optic. Optical groups complete with LED chip on board, lens, anti-glare housing. Optics 50° UGR<16. Protection rating IP20.

PRODUCT SPECS

Installation method	Recessed with frame
Light source	LED
Absorbed power	5x2,2 W
Color temperature	4000K
Color rendering index CRI	>90
Optic	Wide 50°
Finishing	White box - black optic
Luminous flux of the product	847 lm
Luminous efficiency	77 lm/W
MacAdam color tolerance	2
Life time estimate	50000h Ta 25° L90B10
Energy efficiency class	E
Weight	0.10 Kg
Dimension	L150xW27xH60 mm
Hole size	34X156 mm
Power supply/Transformer	Not included
Protocol	See power supply



WEB PAGE



ASSEMBLY INSTRUCTIONS



MANDATORY ACCESSORIES

Box Leva 5



code LV005F/01

Recessed with frame uncategorized wallbox for false ceiling. Bianco finishing wallbox for false ceiling

Technical Sheet



AE700.11C (Copia)



code AE700.12C

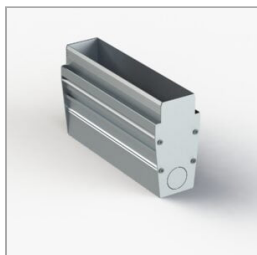
Electronic power supply current

Technical Sheet



OPTIONAL ACCESSORIES

Wallbox for brick wall and concrete – Leva5



code CCLV05

Formwork for masonry and concrete, suitable for Leva5. Internal length 157mm - external length 159,4mm

Technical Sheet



