

Leva 3 recessed - kit

code LV003K.930S-3/01

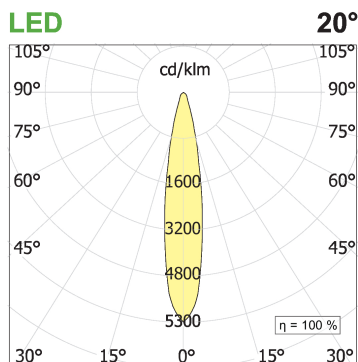
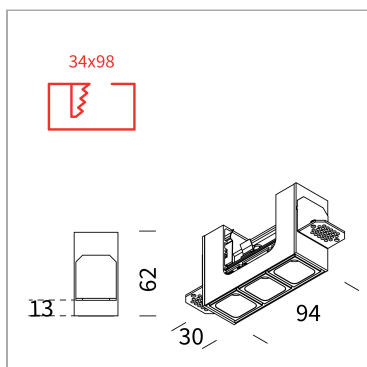


PRODUCT DESCRIPTION

Integrated LED Chip On Board light fixture. Recessed installation with stop. Luminaire body in extruded painted aluminum white. Optical groups complete with LED chip on board, lens, anti-glare housing. Optics 20° UGR<16. Protection rating IP20.

PRODUCT SPECS

Installation method	Recessed with frame
Light source	LED
Absorbed power	3x2,2 W
Color temperature	3000K
Color rendering index CRI	>90
Optic	Spot 20°
Finishing	White
Luminous flux of the product	601 lm
Luminous efficiency	91 lm/W
MacAdam color tolerance	2
Life time estimate	50000h Ta 25° L90B10
Energy efficiency class	E
Weight	0.06 Kg
Dimension	L90xW27xH60 mm
Hole size	34X96 mm
Product Spec	Rectangular shape
Power supply/Transformer	Not included
Protocol	See power supply



WEB PAGE



MANDATORY ACCESSORIES

Box Leva 3



code LV003F/01

Recessed with frame uncategorized wallbox for false ceiling. Bianco finishing wallbox for false ceiling

Technical Sheet



AE700.11C

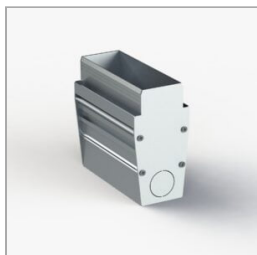


code AE700.11C

Electronic power supply current

OPTIONAL ACCESSORIES

Wallbox for brick wall and concrete – Leva3



code CCLV03

Formwork for masonry and concrete, suitable for Leva3. Internal length 97mm - external length 99,4mm

Technical Sheet



