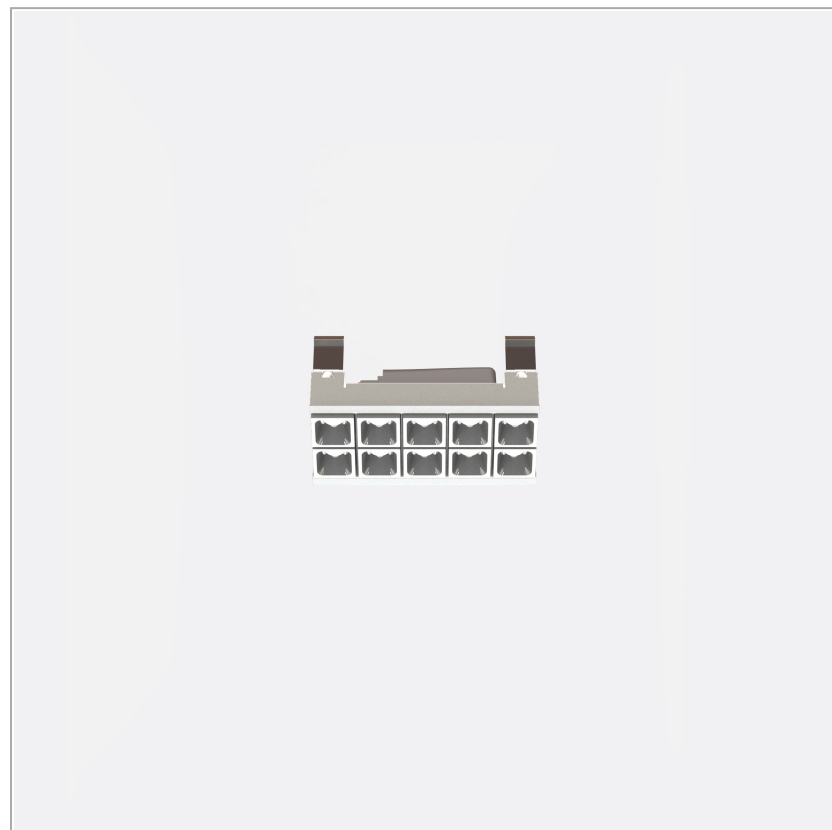


Leva 5+5 recessed - kit

code LV205K..935S/01

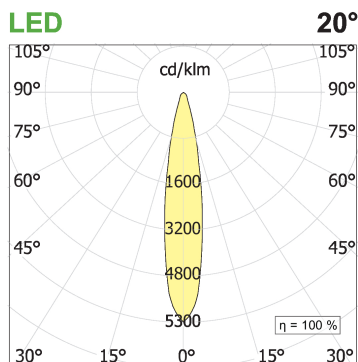
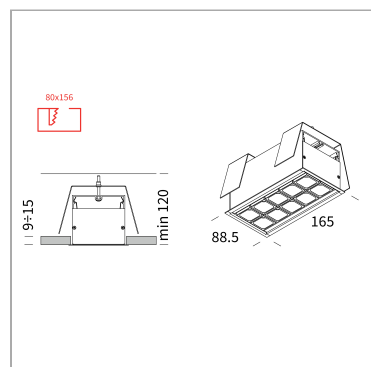


PRODUCT DESCRIPTION

Integrated LED Chip On Board light fixture. Recessed installation with stop. Luminaire body in extruded painted aluminum white. Optical groups complete with LED chip on board, lens, anti-glare housing. Optics UGR<16. Protection rating IP20.

PRODUCT SPECS

Installation method	Recessed with frame
Light source	LED
Absorbed power	10x2,2 W
Color temperature	3500K
Color rendering index CRI	>90
Optic	Spot
Finishing	White
Luminous flux of the product	2179 lm
Luminous efficiency	99 lm/W
MacAdam color tolerance	2
Life time estimate	50000h Ta 25° L90B10
Protocol	On/Off
Energy efficiency class	E
Dimension	L150xW75xH70 mm
Hole size	80X158 mm
Power supply/Transformer	Not included
Protocol	See power supply



WEB PAGE

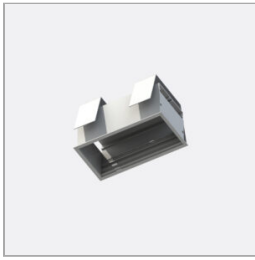


ASSEMBLY INSTRUCTIONS



MANDATORY ACCESSORIES

Accessori Leva Wallbox F 5+5



code LV205F/01

Recessed with frame uncategorized wallbox for false ceiling. Bianco finishing wallbox for false ceiling

Technical Sheet

