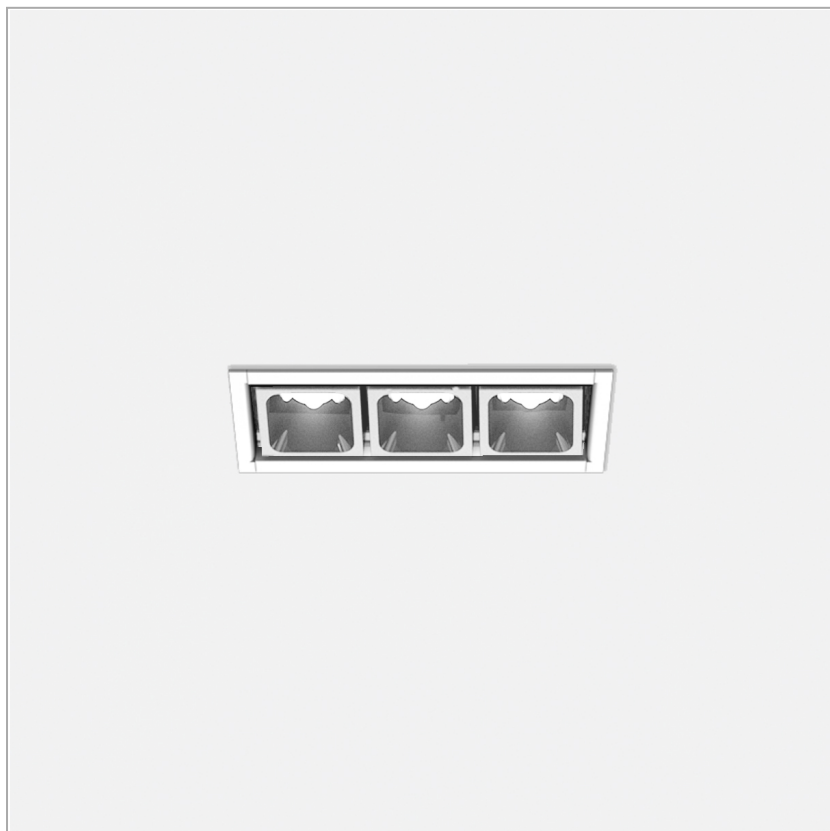


## Leva 3 Outdoor Recessed - kit

code LV003P..930W/01

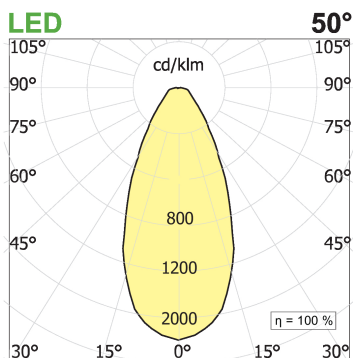
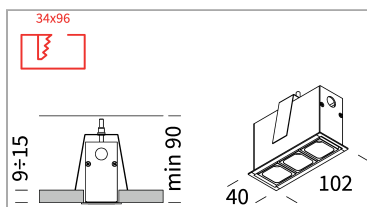


### PRODUCT DESCRIPTION

Integrated LED Chip On Board light fixture. Recessed installation with stop. Luminaire body in extruded painted aluminum white. Optical groups complete with LED chip on board, lens, anti-glare housing. Optics 50° UGR<16.

### PRODUCT SPECS

Installation method	Recessed with frame
Light source	LED
Absorbed power	3x2,2 W
Color temperature	3000K
Color rendering index CRI	>90
Optic	Wide 50°
Finishing	White
Luminous flux of the product	497 lm
Luminous efficiency	75 lm/W
MacAdam color tolerance	2
Life time estimate	50000h Ta 25° L90B10
Energy efficiency class	E
Weight	0.06 Kg
Dimension	L90xW27xH60 mm
IP Grade	Ip56
Protection Class	Class III appliance
Power supply/Transformer	Not included
Protocol	See power supply



### WEB PAGE



### ASSEMBLY INSTRUCTIONS



## **MANDATORY ACCESSORIES**

### **Box Leva 3**



code LV003F/01

Recessed with frame uncategorized wallbox for false ceiling. Bianco finishing wallbox for false ceiling

**Technical Sheet**



### **AE700.10C**

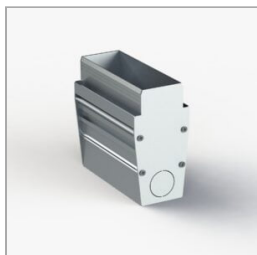


code AE700.10C

Electronic power supply current

## **OPTIONAL ACCESSORIES**

### **Wallbox for brick wall and concrete – Leva3**



code CCLV03

Formwork for masonry and concrete, suitable for Leva3. Internal length 97mm - external length 99,4mm

**Technical Sheet**

