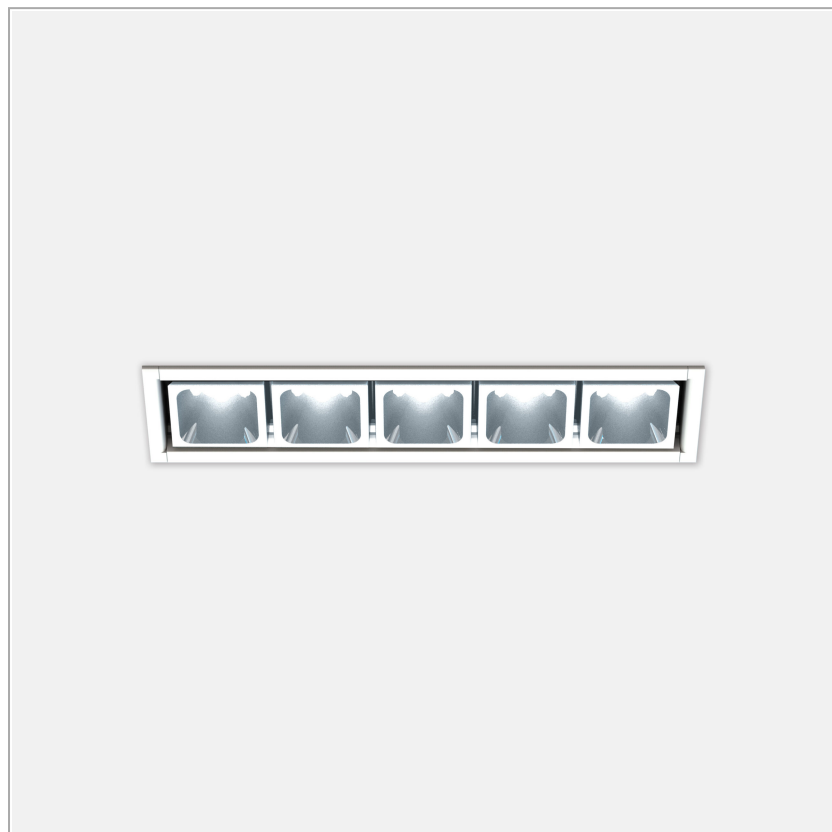


## Leva 5 Outdoor Recessed - kit

code LV005P..940S/01

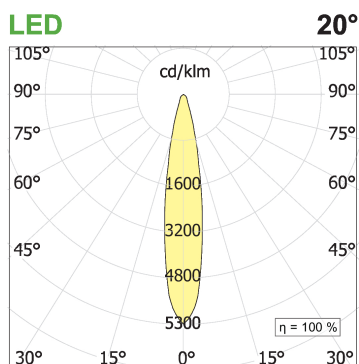
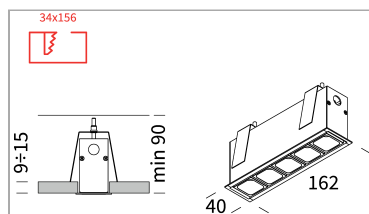


### PRODUCT DESCRIPTION

Integrated LED Chip On Board light fixture. Recessed installation with stop. Luminaire body in extruded painted aluminum white. Optical groups complete with LED chip on board, lens, anti-glare housing. Optics 20° UGR<16.

### PRODUCT SPECS

Installation method	Recessed with frame
Light source	LED
Absorbed power	5x2,2 W
Color temperature	4000K
Color rendering index CRI	>90
Optic	Spot 20°
Finishing	White
Luminous flux of the product	1025 lm
Luminous efficiency	93 lm/W
MacAdam color tolerance	2
Life time estimate	50000h Ta 25° L90B10
Energy efficiency class	E
Weight	0.10 Kg
Dimension	L150xW27xH60 mm
IP Grade	Ip56
Protection Class	Class III appliance
Power supply/Transformer	Not included
Protocol	See power supply



### WEB PAGE



### ASSEMBLY INSTRUCTIONS



## **MANDATORY ACCESSORIES**

### **Box Leva 5**



code LV005F/01

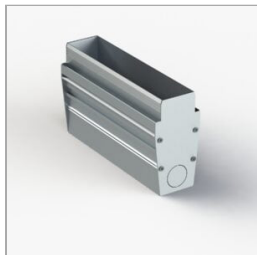
Recessed with frame uncategorized wallbox for false ceiling. Bianco finishing wallbox for false ceiling

**Technical Sheet**



## **OPTIONAL ACCESSORIES**

### **Wallbox for brick wall and concrete – Leva5**



code CCLV05

Formwork for masonry and concrete, suitable for Leva5. Internal length 157mm - external length 159,4mm

**Technical Sheet**



