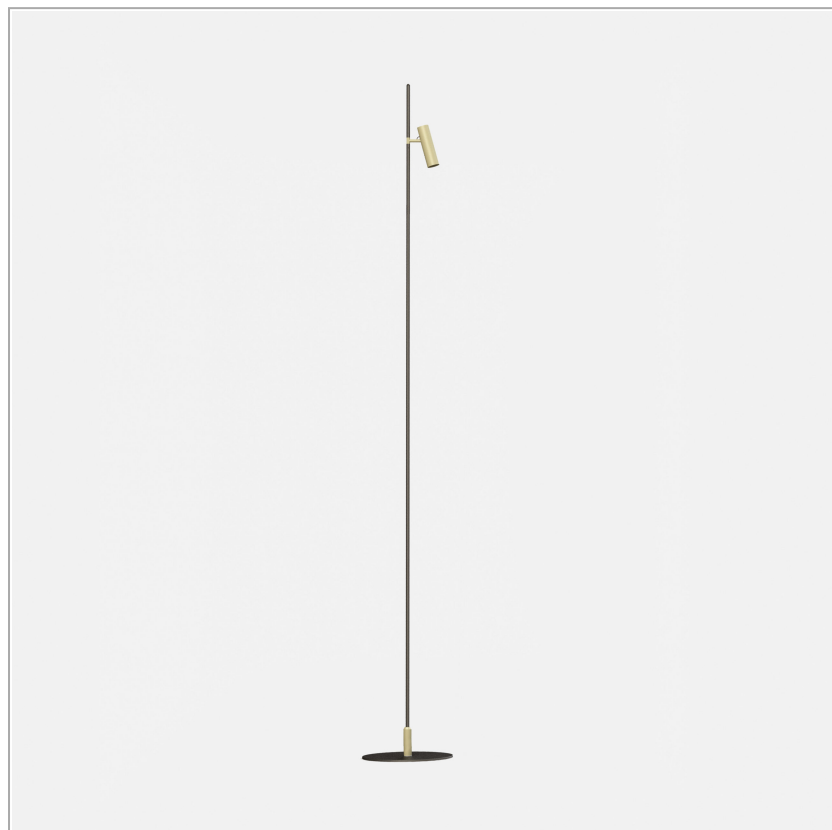


IFerrosi straight pole H3300-60

code IF07.935W/99

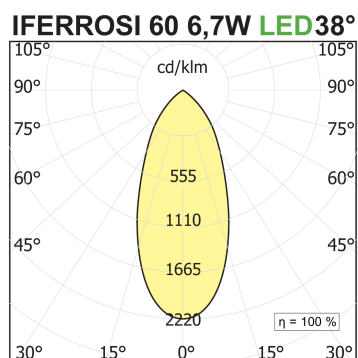
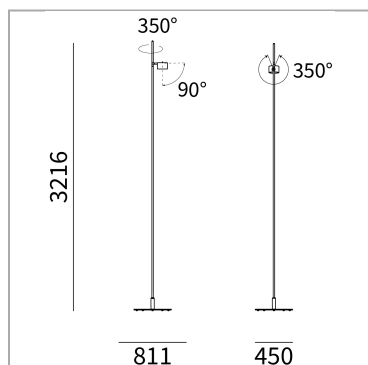


PRODUCT DESCRIPTION

Outdoor floor lamp consisting of a tubular H3197mm. Base diameter 450 mm, complete with Ø60 spot. colour rendering index cri>90. Painted finish of graphite. IP66 degree of protection.

PRODUCT SPECS

Installation method	Floor
Light source	LED
Absorbed power	6,7 W
Color temperature	3500K
Color rendering index CRI	>90
Optic	Wide 38°
Finishing	Graphite
Luminous flux of the product	495 lm
Luminous efficiency	74 lm/W
MacAdam color tolerance	3
Life time estimate	3SDCM 50000h L90 B10 Ta 25°C
Energy efficiency class	D
Weight	16.5 Kg
Dimension	L450xW760xH3197 Ø60 mm
IP Grade	Ip66
Protection Class	Class III appliance
Power supply/Transformer	Not included
Protocol	See power supply



WEB PAGE



MANDATORY ACCESSORIES

AE700.10C

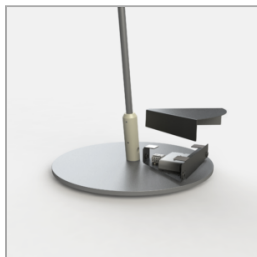


code AE700.10C

Electronic power supply current

OPTIONAL ACCESSORIES

box-for-power-suppliers IFerrosi system



code IF76/99

Family of outdoor floor or wall luminaires, available in finished modules or in a modular system for maximum customization. Versions with LED source projectors for accent light are available. Poles of different heights from 700mm to 3000mm are available, to be combined with spots of 6.7W or 18W. Fixing base or possibility to install in different surfaces: flange for wooden surfaces, clamp for concrete and stake for ground. IP54.

Technical Sheet

