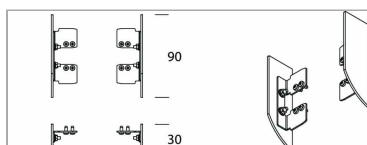
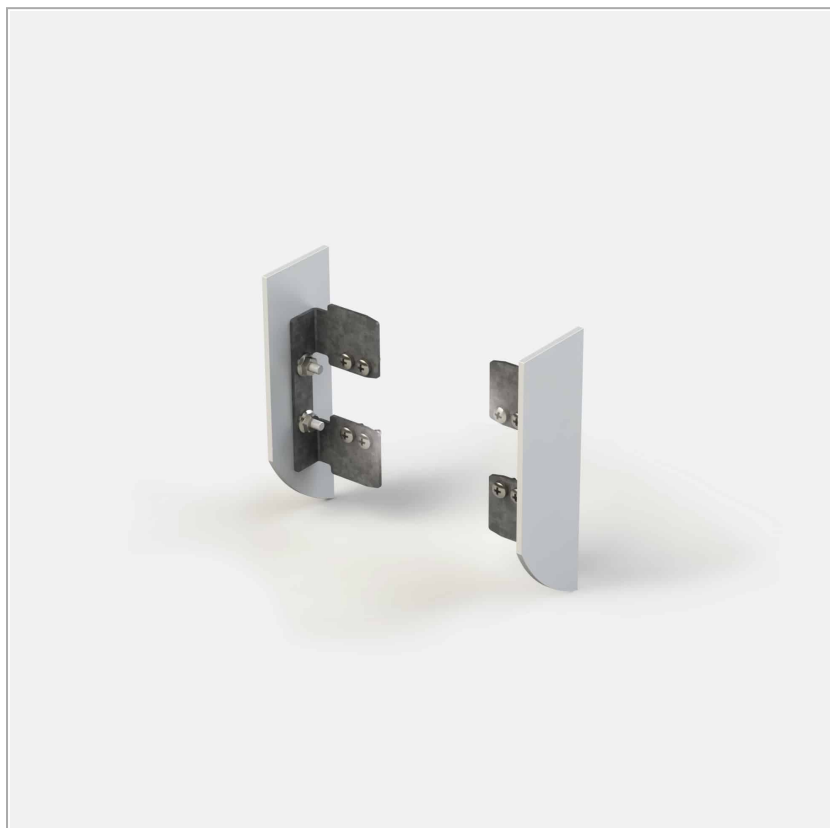


Couple of closure heads for linear profile

code LB422/01



PRODUCT DESCRIPTION

Modular system for direct, diffused and/or accent lighting, consisting of empty profiles made from 90x30 mm painted or anodised extruded aluminium, with a predefined length or cut to measure, to be integrated with LED linear light sources, or projectors. To be completed with side end caps with Light Proof system, opal white diffusing screen or blind closure cover.

PRODUCT SPECS

Installation method	system
Finishing	White
Dimension	mm

WEB PAGE



ASSEMBLY INSTRUCTIONS



Complies with EN605981 and related notes. In the absence of metric symbols, the measurements are all in millimetres.
Luminous flux and power data are initially subject to tolerances +/- 10%. The values refer to an ambient temperature of 25°C unless otherwise specified.
We reserve the right to make changes to our products at any time.

Page 1 / 1